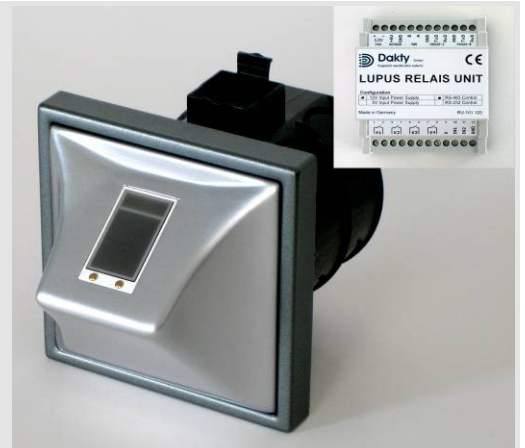


Fingerprint Orion

Your tough security



Features	Biometric recognition module in-wall, stand alone or server based, non-wearing fingerprint sensor with toughest fiber optic surface, Ethernet, RS232 / RS485 interfaces, administration over network, configurable access groups, day time slices and access rules, log files, etc..., transmission of the Finger-IDs or templates over Ethernet or RS485.
Application	Biometric access control for the industry, office and private use for the outdoor or indoor area.
Opening	Four potential free terminals, max. 5 A, max. 230 V placed in the security area can be used in any combination. DIN rail.
Distance Scanner-Relays	Max. 1200 m
Integrated Display	Optical: Yes, No, Quality of the placed finger
Ergonomic	Clearly arranged finger contact area in an ergonomic 35° angle. Perfect to use by children as well as by tall adults with any finger, even in the standard installation height.
Installation	Scanner: German 62 mm deep standard in-wall Opener: DIN rail, e.g. in the electricity meter cupboard
Power Supply	12 V DC or Power over Ethernet PoE
Input Power	Peak: ca. 2,5 W, idle: ca. 1,5 W
Interfaces	Ethernet for administration and if so for the transmission of the Finger-ID. RS485 for relay control or serial transmission of the Finger-ID. RS232 TTL for attached card readers or keypads.
Finger Administration	Central enrollment and user administration under Windows, authorizations distribution over Ethernet. Unlimited user on the PC, several thousand finger-templates in the control unit. Speed search filter for the actual authorizations.
Special Function	Transmission of the Finger-ID or template over Ethernet in real time, to facilitate a central server administration
Tightness	Weather proof, dust proof, water proof
Temperature	-40 °C to +85 °C (-40 °F to 185 °F)
Article Nr.	K101